

Engineering

Matt Jones



newbury-college.ac.uk



ucn.ac.uk



Welcome

Welcome to Newbury College, your first choice for technical, career-focussed training.

As you look to start the next stage of your education, we are here to support you. We understand the transition from school can be daunting and our highly trained staff will guide you through the application and enrolment process, to get you on the right track to the career you want.

#careersnotcourses



Why Newbury College?



PROGRESSION-FOCUSED

- Subjects based on your chosen career
- Career-focused objectives



SKILLS-BASED

- Fewer exams
- Different assessment methods
- Practical subjects

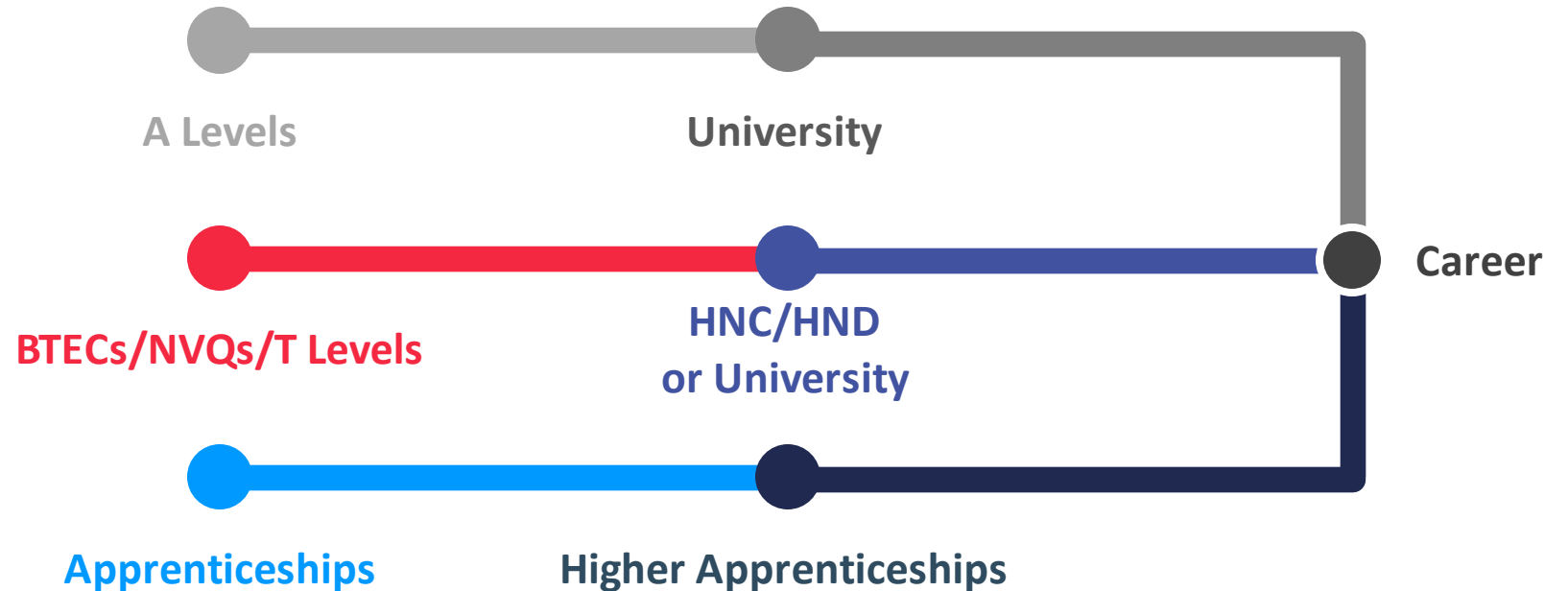


EMPLOYER-LED

- Industry placements with excellent employers
- Curriculum influenced by businesses

College Progression vs Sixth Form

- ✓ Faster route to your chosen career
- ✓ More options available
- ✓ Lower cost and debt-free Higher Education*



Your study programme

Full-time study programmes are assessed in a variety of ways, rather than just through the traditional essay and exam methods, this can be beneficial to students who prefer to be assessed differently and demonstrate their skills in other ways.

VOCATIONAL QUALIFICATIONS

Career-focused qualifications that meet needs of employers and job sectors like **BTECs**, **NVQs** and **T Levels**.

Your **Academic Tutorial** will help you to set targets and monitor your progress.

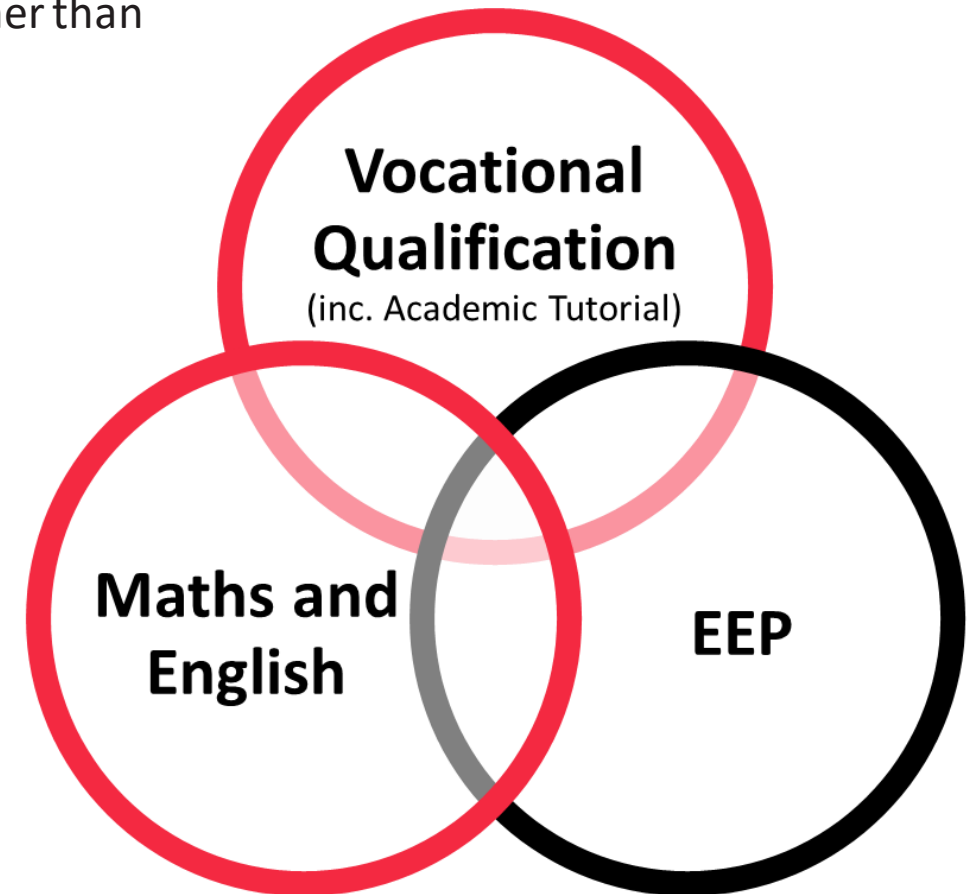
MATHS AND ENGLISH

You may need to resit your English and/or maths qualifications. We will support you in achieving your target grade.

EEP

EEP stands for **Employment**, **Enrichment** and **Pastoral**.

It provides you with a wide range of opportunities to enrich your learning and professional development beyond your main subject of interest. These could include sports, clubs and activities, trips and visits, work placement and work-related activity, tutorial sessions and guest speakers.



Placements and Partnerships

EMPLOYABILITY

A special WRA programme built into your course to learn the skills for the workplace including:

- CV and interview preparation
- vacancy and application writing
- trips and employer visits
- employer supported projects and activities
- apprenticeship and progression opportunities

WORK PLACEMENTS

From 2 to 9 weeks in length, these often lead to jobs and part-time work alongside your course.



Level 2 Diploma in Engineering

The Level 2 Diploma in Engineering is targeted toward finding full time employment as an apprentice within the metal trade.

Some of the modules covered are:

- Know engineering health and safety requirements.
- Understand drawings and specifications.
- Know about working in engineering.
- Know requirements for materials in engineering.
- Know properties of engineering materials.
- Know the functions within a manufacturing organisation.

Units
(201) Working in Engineering
(202) Principles of engineering technology
(203) Principles of manufacturing technology
(204) Machine components using milling techniques
(205) Machine components using turning techniques
(206) Using bench fitting techniques

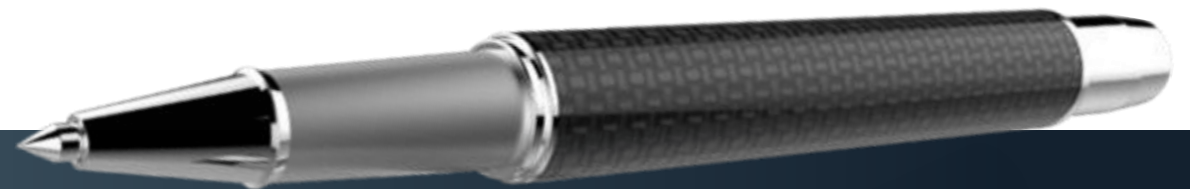
L2 Assessment

This course is assessed by:

- assignments
- external exam
- controlled assessment

These will include practical work related activities.

You will be given adequate time to complete assessments.



Facilities



L2 Uniform and equipment

All tools and tooling will be supplied, however it is recommended that you start to build up your own tool box, especially if you want to work within the metal trade.

You will need to purchase:

- Lab/Warehouse Coat/Dust Coat
- Steel Toe Cap Boots
- Safety Glasses
- Ring Bound Hard Cover Book
- Small Padlock (Optional but recommended)

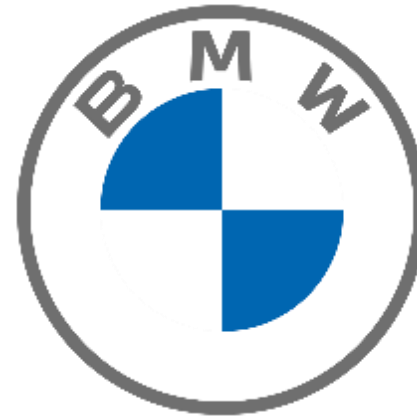


Visits and trips

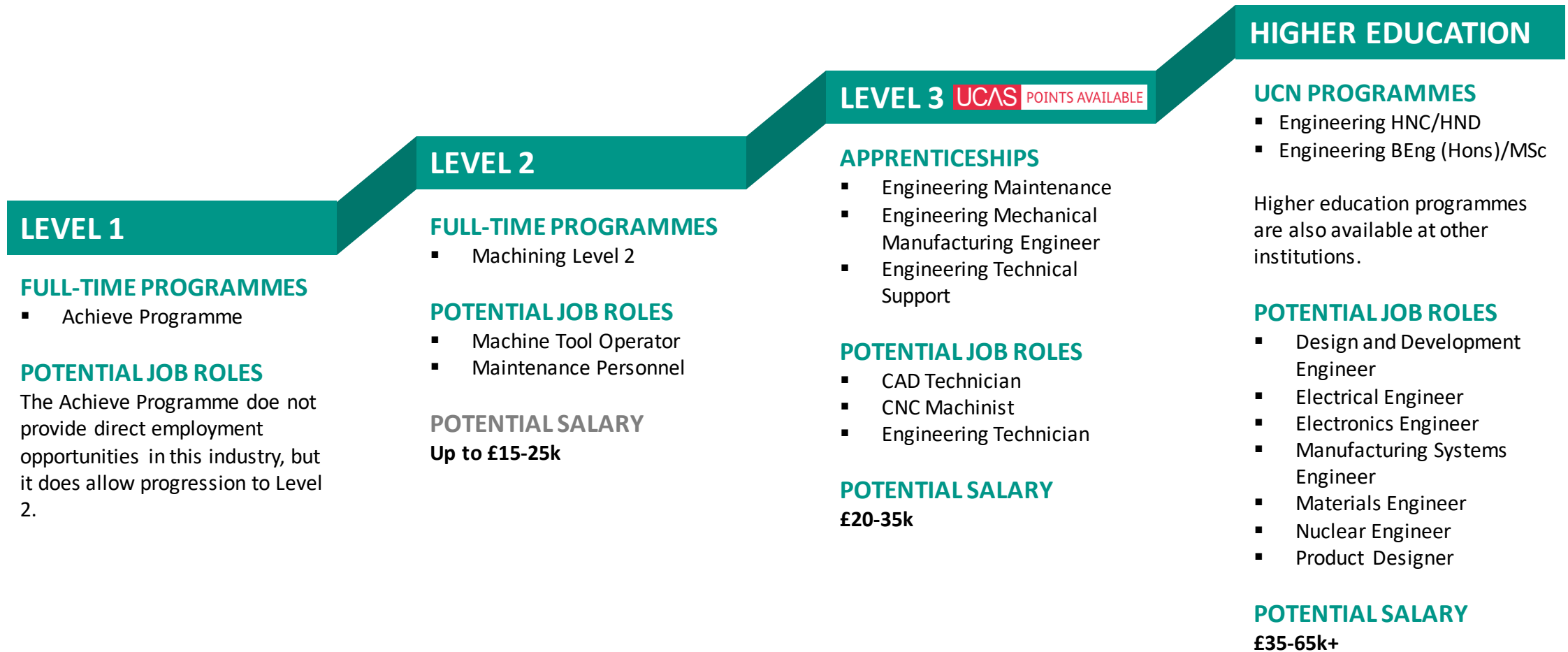
Trips to engineering related local businesses will be included whenever possible.

In previous years classes have visited:

- Birmingham NEC
- National Instruments
- Adbro Controls
- BMW
- The BMW Mini Plant
- Newbury Fire Station
- Xtrac



Progression



Level 3 Apprenticeship

- This professional qualification is for those working in, or wishing to work within engineering. It is a day-release course over two years which provides a nationally-recognised qualification that offers career progression for those already in employment. The qualification provides a thorough grounding in the key concepts and practical skills required by the sector with national recognition by employers

Year 1	Year 2
Engineering Principles	Thermodynamic Principles & Practice
Engineering Product Design & Manufacture	Computer Aided Design
Delivery of Engineering Processes Safely as a Team	Specialist Engineering Project
Electronic Printed Circuit Board Design & Manufacture	Calculus to Solve Engineering Problems
Applied Commercial & Quality Principles in Engineering	Computer Aided Manufacturing and Planning
	Or
	Electronic Devices

Facilities



How we can help

Tutors and support staff work closely together and with other local partners to provide you with:

- Learning support
- Progression coaching
- Health and wellbeing advice
- Financial support including free travel, meals and help with child care costs
- Careers advice
- Help with university applications



Funding your programme



Education & Skills
Funding Agency

The Education & Skills Funding Agency (ESFA)

The Education & Skills Funding Agency funds adult Further Education (FE) and skills training in England. It forms part of a network of organisations in England who commission, manage and promote training for adults and young people. The ESFA funds non-levy Apprenticeships (16yrs +), work placed and classroom based learning programmes throughout England for learners aged 19 and above. If you are enrolled onto an ESFA funded programme this is match funded by the European Social Fund (ESF). The ESFA also funds programmes for individuals aged 14-19 which includes the Study Programme (16-19) and Traineeships (16-18).



European Union
European
Social Fund

European Social Fund (ESF)

You may be enrolled onto a specific ESF project which will be funded by the European Union or if you are engaged onto any of our ESFA programmes, including non levy Apprenticeships, then this will be matched funded by ESF.

Any questions?

Matt Jones

m-jones@newbury-college.ac.uk



If you have any questions or require further information on this course or any other aspects of studying at Newbury College, please contact us.

