

Art and Design

Alison Harris



newbury-college.ac.uk



ucn.ac.uk



Welcome

Welcome to Newbury College, your first choice for technical, career-focused training.

As you look to start the next stage of your education, we are here to support you. We understand the transition from school can be daunting and our highly trained staff will guide you through the application and enrolment process, to get you on the right track to the career you want.

#careersnotcourses



Why Newbury College?



PROGRESSION-FOCUSED

- Subjects based on your chosen career
- Career-focused objectives



SKILLS-BASED

- Fewer exams
- Different assessment methods
- Practical subjects

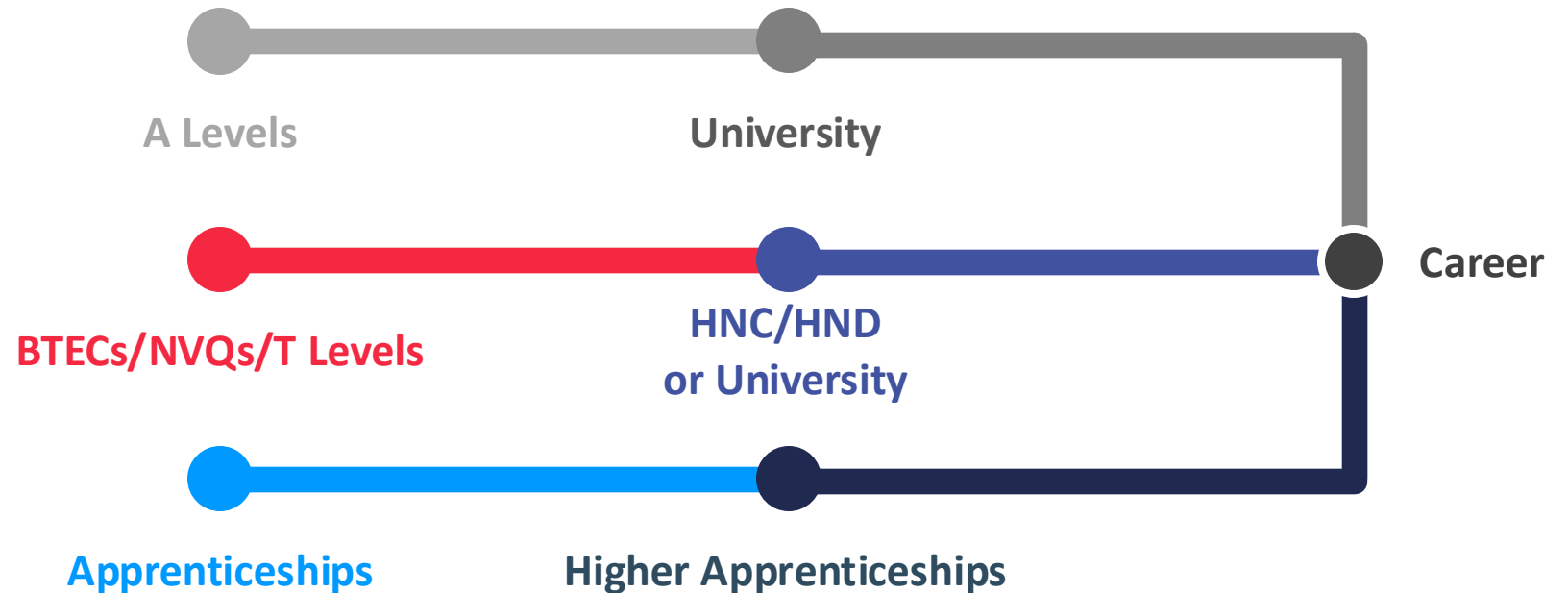


EMPLOYER-LED

- Industry placements with excellent employers
- Curriculum influenced by businesses

College Progression vs Sixth Form

- ✓ Faster route to your chosen career
- ✓ More options available
- ✓ Lower cost and debt-free Higher Education*



Your study programme

Full-time study programmes are assessed in a variety of ways, rather than just through the traditional essay and exam methods, this can be beneficial to students who prefer to be assessed differently and demonstrate their skills in other ways.

VOCATIONAL QUALIFICATIONS

Career-focused qualifications that meet needs of employers and job sectors like **BTECs**, **NVQs** and **T Levels**.

Your **Academic Tutorial** will help you to set targets and monitor your progress.

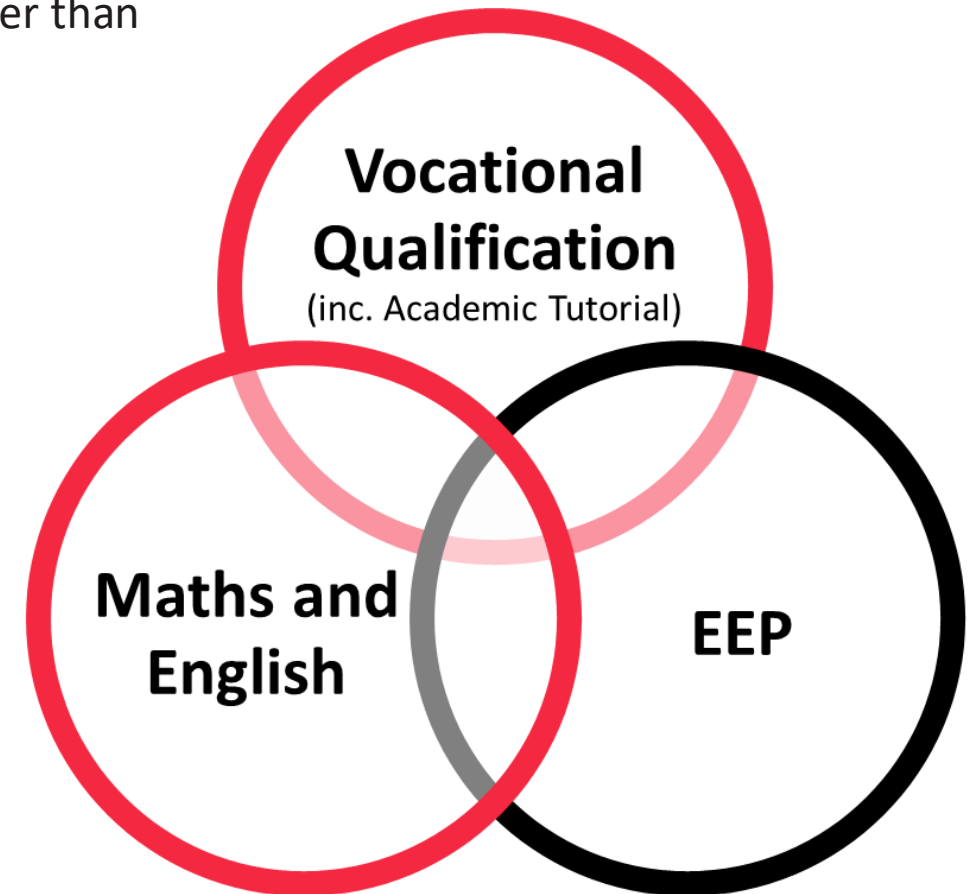
MATHS AND ENGLISH

You may need to resit your English and/or maths qualifications. We will support you in achieving your target grade.

EEP

EEP stands for **Employment**, **Enrichment** and **Pastoral**.

It provides you with a wide range of opportunities to enrich your learning and professional development beyond your main subject of interest. These could include sports, clubs and activities, trips and visits, work placement and work-related activity, tutorial sessions and guest speakers.



Placements and Partnerships

EMPLOYABILITY

A special WRA programme built into your course to learn the skills for the workplace including:

- CV and interview preparation
- vacancy and application writing
- trips and employer visits
- employer supported projects and activities
- apprenticeship and progression opportunities

WORK PLACEMENTS

From 2 to 9 weeks in length, these often lead to jobs and part-time work alongside your course.



BTEC Level 2 Diploma in Art & Design Skills (2020)

This Level 2 qualification, equivalent to three GCSE qualifications, is designed for learners who are looking to study Art and Design as a **one-year, full-time course** and supports progression to Level 3 study in Art and Design.

It provides fundamental creative skills that are valued in other subject areas such as Creative Media, Engineering, Business or Marketing, and supports progression to an apprenticeship in Art and Design or related sectors.



Emily Ballard

BTEC Level 2 Diploma in Art & Design Skills (2020)

WHAT DOES THIS QUALIFICATION COVER?

The content of this qualification has been developed in consultation with teachers and industry professionals to ensure that it supports progression to further study or training at Level 3. The content is appropriate for study at Level 2, and consistent with current industry practice, providing learners with a foundation in the skills needed to progress to further education with an understanding of the creative industry, and the roles and opportunities available.

Learners taking this qualification will study three mandatory learning and teaching modules:

A: Exploring and Developing Art and Design Skills

B: Personal Development

C: Responding to a Creative Brief



Lunga Makasi

BTEC Level 2 Diploma in Art & Design Skills (2020)

WHAT COULD THIS QUALIFICATION LEAD TO?

On qualifying, you could progress onto the BTEC Level 3 Foundation Diploma in Art, Design and Media Practice or an equivalent qualification in Art and Design or another complementary sector.

You will have had the opportunity to develop your technical art and design skills through a process of self-evaluation, practice and review. In addition to exploring the sector-specific content, you will have developed the transferable skills needed to progress to further education and ultimately higher education and employment such as communication, planning and managing projects, and creative problem solving.

This qualification supports you in developing confidence in taking ownership of and responsibility for your own direction, work and choices.



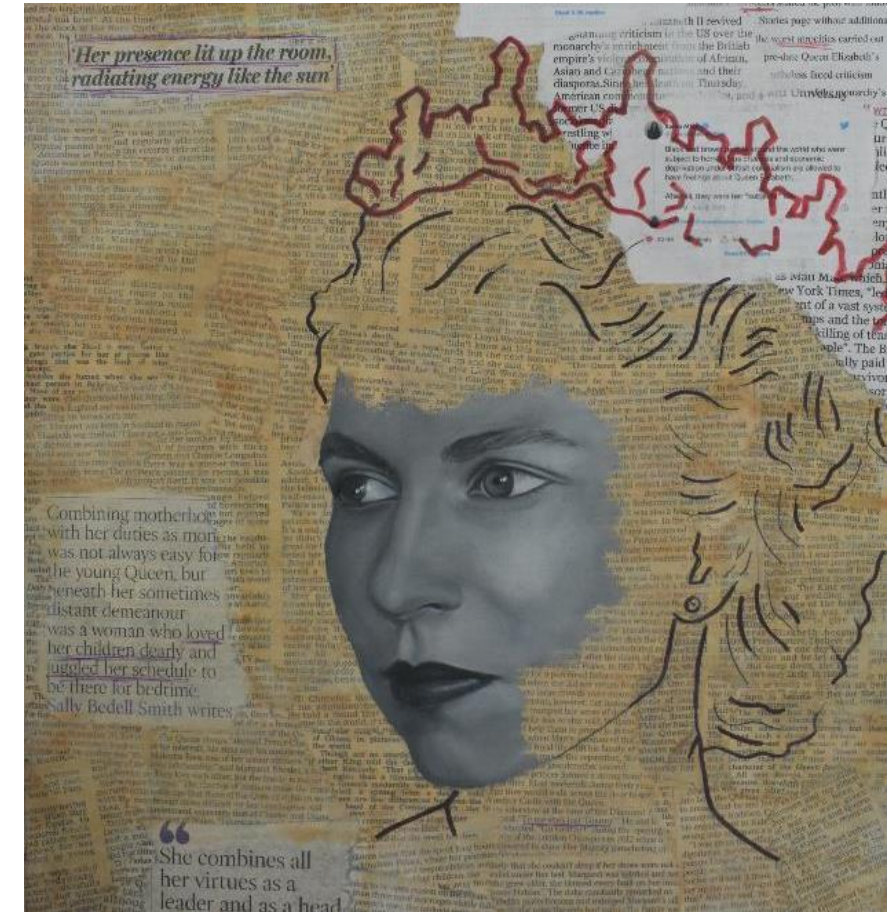
Tamsin Trew

BTEC Level 3 and Level 4 Foundation Diploma in Art, Design and Media Practice (2020)

This Level 3 qualification is for learners who are looking to broaden their practical and theoretical understanding of Art, Design and Media practice as **a bridging year** in preparation for higher education.

It is suitable for:

- Learners who may not have had a significant amount of learning of creative subjects at Level 3
- Learners who have prior learning at Level 3 within the creative sector but wish to consolidate their learning further before progressing to HE
- Adult learners with some creative experience, but without Level 3 creative qualifications



Olivia Raines

BTEC Level 3 and Level 4 Foundation Diploma in Art, Design and Media Practice (2020)

WHAT DOES THIS QUALIFICATION COVER?

The content of this qualification has been developed in consultation with academics to ensure that it supports progression to higher education. In addition, teachers, employers and professional bodies have been involved and consulted to confirm that the content is appropriate and consistent with current practice for those learners who choose to enter employment directly.

The qualification provides the knowledge, skills and understanding that will prepare learners for further study or training.

Learners taking this qualification will study one mandatory learning and teaching module covering six areas of learning:

Investigation

Evaluation and review

Communication

Experimentation

Realisation

Self-directed practice



Fiona Smeaton

BTEC Level 3 and Level 4 Foundation Diploma in Art, Design and Media Practice (2020)

WHAT COULD THIS QUALIFICATION LEAD TO?

This qualification offers you the opportunity to experiment widely and take creative risks to develop a broad portfolio of work and the professional approach required for progression. It provides you with opportunities to develop your art, design and media skills over the course of study through a process of self-direction, reflective practice and communication, which are key skills for **progression to higher education**.

You will develop the transferable and higher-order skills valued by higher education providers and employers, such as communication and self-direction.

This Level 3 qualification attracts **UCAS points**, and meets the admission requirements for most relevant courses, such as design, experience and interaction, digital media, communication and arts subjects.

UCAS points are based on the qualification grade outcomes. Please check the UCAS website for details. Always check the entry requirements for degree programmes with the specific higher education providers.



Lily Page

Specialist Materials

The Art and Design department provides the specialist materials required for the course. However, if you wish to explore other materials which are not provided as part of the programme of study, you will need to source these independently.

Protective clothing

Appropriate PPE such as aprons, gloves, eye protection and masks (*for use when using aerosol paints, spray mount, etc.*) are provided.

Suggested art materials

Learners should have a basic set of art equipment and materials including such items as:

- A3 sketchbook (black/white pages)
- Lined notebook
- Pencil sharpener, rubber, ruler, scissors, glue stick, scalpel, metal ruler, A4 cutting mat, masking tape
- Set of sketching pencils (*HB - 6B*)
- Pens, highlighters, coloured/metallic gel pens, white gel pen, markers, paint markers, pencil colours, black fine liner pens
- Set of round, nylon paint brushes (*small, medium and large*)
- Watercolour paints (*KOH-I-NOOR Anilinky 12 Colour*)
- Mobile phone data/charging cable
- Headphones to listen to your music
- Relevant equipment, materials and resources for your current assignment work

Visits and Trips

Cities, Art Galleries and Museums

Newbury

- The Base, Greenham - participation in the Student GENerate Art Exhibition
- 101 Outdoor Arts – provide audience feedback to professional performance art companies
- City Arts Newbury – exhibition & work placement
- The Watermill Theatre – stagecraft workshop
- The Corn Exchange 'Careers in the Arts'
- Waterside Centre
- Newbury Museum
- Arlington Arts Centre

London

- Natural History Museum
- V&A
- Tate Modern

Bristol

- Upfest Gallery and North Street street art tour & Bristol Suspension Bridge
- Martin Parr Foundation & Arnos Vale Cemetery photoshoot

Oxford

- Natural History Museum & Pitt Rivers Museum
- Ashmolean
- History of Science Museum

Various location Art & Photography field trips

Artist talks – Nick Schlee, Julie Bennett, Nick Cennamo-Smith, Matt Hulse, etc.



Visits and Trips

We have excellent links with Southampton city gallery, which we visit at least once a year to view their permanent exhibition and they have an excellent rolling programme of visiting exhibitions. This year we have been invited to enter work for their open exhibition, the students have been working on this live brief in their first term.

We organise practical workshops which take place at the gallery giving the students the opportunity to respond to the exhibits through practical exploration.

We also visit behind the scenes where students get the opportunity to meet a range of creative professionals such as curators, conservation artists.

We also undertake other visits throughout the course and academic year, and these relate to live vocational assignment briefs.



BTEC Level 2 Diploma in Art and Design Skills

Assessment

This is a vocational programme, and it is assessed by:
(how is it assessed)

- Assessment is carried out internally within the course and there are no external units.
- There are three units (two are practical and skills building) and one is a progression/professional practice unit.
- To complete and achieve on the programme you are required to pass all three units. The grading criteria is pass, merit or distinction.
- The programme leads towards a level 3 programme in art and design or another vocational subject/programme. A minimum of a merit must be achieved to be considered for progression onto a level 3 programme.



BTEC Level 3 Foundation Diploma in Art, Design and Media Practice

How will you be assessed?

All evidence produced for assessment is based on practical portfolios of work. The same five assessment criteria are used to assess all work throughout the qualification, making the assessment process simple and clear.

You will gain skills in:

Investigation
Communication
Practical skills
Development
Approach

Learning and teaching modules	Assessment units	180 Certificate	240 Extended Certificate	360 Diploma
A: Exploring and Developing Art and Design Skills	A1: Skills Development (120 GLH) ■ Exploration of the fundamentals of art and design practice, learning how skills are integrated to create work.	Mandatory	Mandatory	Mandatory
	A2: Art and Design Project (60 GLH) ■ Application of creative practices to develop a full art and design project.	Mandatory	Mandatory	Mandatory
B Personal Development	B1: Personal Development (60 GLH) ■ Exploration of roles within the art and design sector and further development of the skills needed to progress towards personal aims		Mandatory	Mandatory
C Responding to a Creative Brief	C1: Responding to a Creative Brief (120 GLH) ■ Production of a proposal and practical response to a creative brief, managing the project from inception to communication of outcomes.			Mandatory



How we can help

Tutors and support staff work closely together and with other local partners to provide you with:

- Learning support
- Progression coaching
- Health and wellbeing advice
- Financial support including free travel, meals and help with childcare costs
- Careers advice
- Help with university applications



Funding your programme



Education & Skills
Funding Agency

The Education & Skills Funding Agency (ESFA)

The Education & Skills Funding Agency funds adult Further Education (FE) and skills training in England. It forms part of a network of organisations in England who commission, manage and promote training for adults and young people. The ESFA funds non-levy Apprenticeships (16yrs +), work placed and classroom-based learning programmes throughout England for learners aged 19 and above. If you are enrolled onto an ESFA funded programme this is match funded by the European Social Fund (ESF). The ESFA also funds programmes for individuals aged 14-19 which includes the Study Programme (16-19) and Traineeships (16-18).



European Union
European
Social Fund

European Social Fund (ESF)

You may be enrolled onto a specific ESF project which will be funded by the European Union or if you are engaged onto any of our ESFA programmes, including non-levy Apprenticeships, then this will be matched funded by ESF.

Any questions?

Alison Harris

a-harris2@newbury-college.ac.uk

If you have any questions or require further information on this course or any other aspects of studying at Newbury College, please contact us.

