



SCHOOL LEAVERS MINI-GUIDE

2026/2027


Newbury College
Est. 1948

UCN UNIVERSITY
CENTRE
NEWBURY

Super7 SUPPORTS SUCCESS

Rooted in pedagogy and metacognition, the 'Super 7' represents the seven core principles that form the foundation of Newbury College's philosophy and approach to teaching, learning, and assessment.

Each of the seven principles focuses on a different aspect of learning:

- **Bigger Picture** helps students understand the structure and purpose of each lesson, ensuring they can see how their learning fits into a larger context.
- **Knowledge Building** focuses on deepening understanding by linking new concepts to prior knowledge. Through expert instruction, guided practice, and rehearsal,

students build a strong foundation of knowledge, ensuring they can confidently apply their learning in different contexts.

- **Language Building** develops students' ability to communicate effectively, particularly using subject-specific vocabulary.
- **Q&A Techniques** encourages active questioning and dialogue, helping students validate their understanding through discussion with teachers and peers.
- **Recall and Retrieval** reinforces learning by encouraging students to recall information at key intervals, rather than simply memorising facts for the short term.
- **Assessment and Feedback** plays a crucial role in helping students reflect on their progress and identify areas for improvement.
- **Independent Learning** empowers students to take ownership of their education by developing self-regulation and problem-solving skills.

By embedding these approaches into their daily studies, students gain the confidence and self-awareness needed to excel in their chosen careers.



newbury-college.ac.uk/super7



T-LEVELS
THE NEXT LEVEL QUALIFICATION

WELCOME



Lee Jamieson, Deputy Principal

As you weigh up your next steps and start your personal and professional journey, we're here to help you make a confident choice.

Newbury College is an excellent alternative to sixth-form. Our career-focused pathways are shaped with employers to help you gain recognised qualifications, real experience, and the skills that open doors to work or further study. Our programmes blend classroom learning with substantial work related activity, giving you the technical know-how and hands-on practice that employers value.

We know moving on from school can feel daunting, and we will support you every step of the way. Our qualified teachers bring industry experience, and our specialist support teams will guide you through your programme,

including achieving English and maths, where needed.

Whether you already have a clear goal or are exploring ideas, we look forward to welcoming you and helping you progress from school into a rewarding career and beyond.

HOW TO APPLY

We are confident that you will find a course that interests you at Newbury College. Take a look at the subjects listed in this guide, then search our website to find out more information and apply online.

APPLY NOW



ONLINE

The easiest way to apply. Find the course online and click the 'apply now' button.

NEED HELP?

Contact us on 01635 845000 or email info@newbury-college.ac.uk

DISCLAIMER AND DATA PROTECTION

Newbury College endeavours to provide a wide range of courses and learning programmes that meet the requirements of the local community. Some of the courses in this guide may still be awaiting approval from the awarding body and the majority of courses are subject to minimum enrolment numbers. For details please visit: newbury-college.ac.uk/terms

Data protection: Newbury College stores and processes all student data in accordance with the provisions of the General Data Protection Regulation (GDPR).

WHY NEWBURY COLLEGE?

Newbury College is a mainstream general Further Education (FE) college. We:

- provide programmes for young people and adults
- offer a range of vocational and technical programmes (courses) with industry experienced tutors
- have provision to meet the needs of young people with SEND and those with EHC plans
- prepare students for careers and life beyond college
- offer degree level study programmes through University Centre Newbury (UCN)
- have a small campus with a friendly community feel



PROGRESSION-FOCUSED

If you're looking for a particular career path then a vocational programme or T Level could be better for progressing to employment or university than sixth form, combining practical learning with subject and theory content.



EMPLOYER-LED

Your curriculum is informed and shaped by our relationships with business partners to ensure you develop the skill and knowledge employers want.



SKILLS-BASED

Study programmes have different assessment methods with a number of ways to demonstrate your skills.

EXPERIENCE NEWBURY COLLEGE

Experiencing Newbury College for yourself is the perfect way to explore your options. We are using technology and events to help you connect with us.

SOCIAL MEDIA

Find out what it is really like to study at Newbury College from students and tutors on our social media platforms. Follow us for real life case studies, important updates and celebrations of success.

Follow [@newburycollege](#)



EVENTS

Visit one of our events at our Monks Lane campus, or see us when we visit your school. newbury-college.ac.uk/events

PROGRAMME PICKER

Not sure what to study? Try the Newbury College Programme Picker. An AI-powered tool to help guide you in choosing a career path. We can't guarantee it will predict your perfect career, but we hope it can help you see which industries and occupations are suited to your individual skills, personality traits and interests.

newbury-college.ac.uk/help



DIFFERENT WAYS TO STUDY

FULL-TIME STUDY PROGRAMMES

Career-focused study programmes are ideal for school leavers who prefer practical learning over academic study. These programmes include at least one vocational qualification and other components to get you ready for work and adult life. They are assessed in various ways, not just through essays and exams, which is great for students who like to show their skills in different ways.

VOCATIONAL QUALIFICATIONS

Career-focused qualifications that match the skills, knowledge and behaviours employers need.

MATHS AND ENGLISH

You may need to resit your English and/or maths qualifications. We will support you in achieving your target grade.



INDUSTRY EXPERIENCE

Introduction to employers, work experience and preparation for key aspects of future employability such as interview techniques and application submission.

PASTORAL AND PERSONAL DEVELOPMENT

Opportunities to enrich your learning and develop your skills beyond your main subject of interest. These could include tutorial sessions, sports, clubs, activities, trips and visits.

ACADEMY PROGRAMMES

We work in partnership with specialist providers to offer academy programmes in Performing Arts, Football and Sports.

Partnerships currently operate with:

- Athletic Football Academy
- Basingstoke Town FC Academy
- Kingsclere Performing Arts
- Procision Football Academy

Academy programmes are structured in a similar way to full-time programmes, with the additional industry support of our partners.

SCHOOL WORKSHOPS

Workshops can be arranged to engage pupils and support their career aspirations. We work with schools to identify the areas that students are interested in and, where possible, map activities to their learning objectives and progression goals.

Our professional, industry-standard facilities create the perfect simulated work environment to help provide students with a greater understanding of how to operate in a modern workplace and prepare for the next stage of their progression.

Talk to your school to see if you can get involved.



T-LEVELS

Alongside apprenticeships and A Levels, T Levels are one of the main options for school leavers currently offered at level 3.

The structure of T Levels is different from other vocational programmes. The number of hours you will study increases significantly to approximately 1,800 hours over the two years (including the industry placement). The industry placement element increases to 45 days, but can last up to 60 working days, making it much more meaningful to the you and the employer.

After completing a T Level programme, you will have industry experience and transferable skills to use in the workplace, an apprenticeship or university, having also earned UCAS points.



HIGHER EDUCATION

Higher education opportunities are available via University Centre Newbury (UCN), an employer-led partnership of local universities and education providers.

Operating from within the existing Newbury College building and supported by state-of-the-art facilities, our higher education programmes are designed to encourage career progression.

With flexible learning options and programmes designed to suit the skills needs of businesses, UCN delivers higher national qualifications and apprenticeships, without the need to relocate.

Degree programmes are delivered on-site, in partnership with Bournemouth University.

BU Bournemouth
University



APPRENTICESHIPS

An apprenticeship is a job that provides you with a wage and the training for industry standard qualifications.

When you're an apprentice:

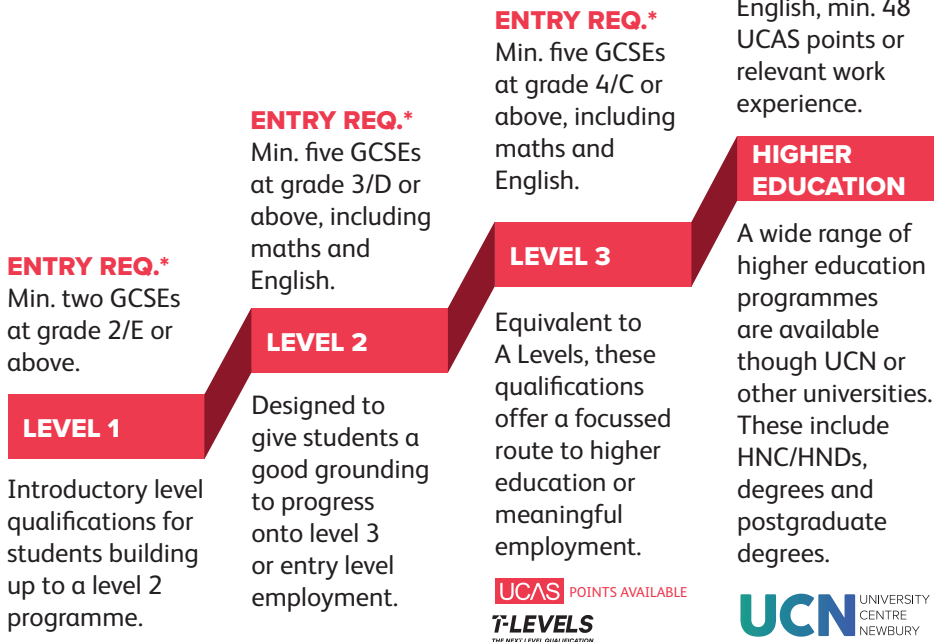
- you get paid and train at the same time, with at least 20% of your time spent in off the job training, often at college
- you train to be fully competent in your chosen occupation
- you're on a career path - with lots of future potential for you

We can support you with finding an apprenticeship opportunity with a local employer. For more information on apprenticeships, visit newbury-college.ac.uk/apprenticeships

**SKILLS
FOR LIFE**
APPRENTICESHIPS

WHERE TO START

The programme you choose is the first step onto the career pathway that will shape your future. Find your starting point on the chart below to see which level is most suitable. Our team at Newbury College can support you with your choice and ensure that your starting point matches your skills and career aspirations.



LOOKING TO GO TO UNIVERSITY?

T Levels and other vocational qualifications prepare students for university, with UCAS points, independent study skills and the opportunity to develop a portfolio of work that demonstrates your academic and technical abilities.

GCSE GRADE SYSTEM

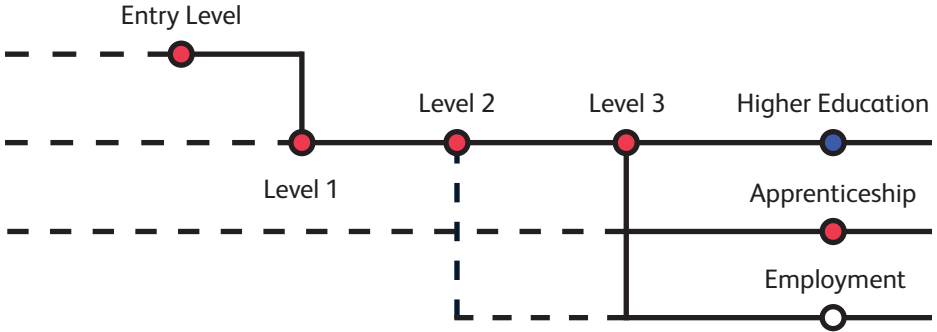
NEW	9-8	7	6	5-4	3	2	1	
OLD	A*	A	B	C	D	E	F	G

*Some pathways may have different entry requirements than indicated above, Subject specific criteria will be discussed at interview.

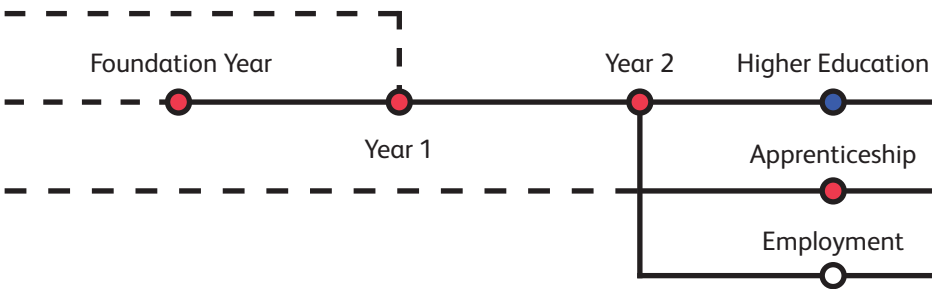
TYPICAL JOURNEYS

Your college journey will usually be between 2 to 3 years or beyond, especially if you continue your studies into higher education or if you have an EHC plan. Let's take a look at some typical journeys that young people take with us.

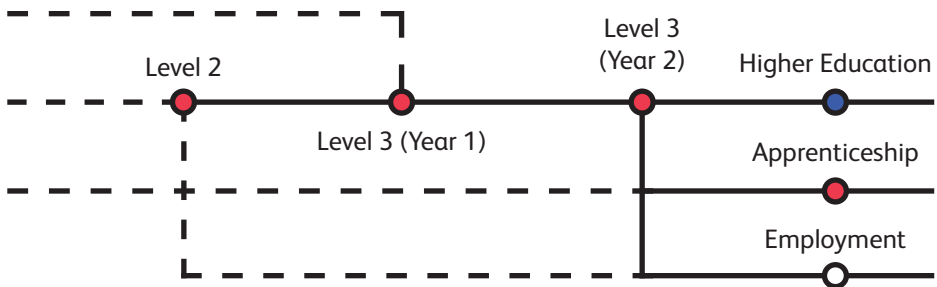
NVQ-STYLE PROGRAMMES (MOTOR, BEAUTY, HAIR)



T LEVEL PROGRAMMES



OTHER PROGRAMMES



HOW IS COLLEGE DIFFERENT TO SCHOOL?

CAREERS, NOT COURSES

Our focus is on helping you prepare for a career you'll enjoy, in an industry that interests you. You should look at your programme as a job, and your tutor as your boss. They will have expectations of you and, along with Student Development Coaches and other specialist staff, will support you to progress into meaningful employment.

PROFESSIONAL ENVIRONMENT

Newbury College and University Centre Newbury are professional, working environments where staff and students are on first name terms.

You should treat the campus like a place of work, attending all lessons, completing all set tasks and showing respect for others.



TIMETABLE

Most full-time study programmes are based on 3 days in college per week.

Much of this learning will take place in a classroom, workshop or specialist facility.

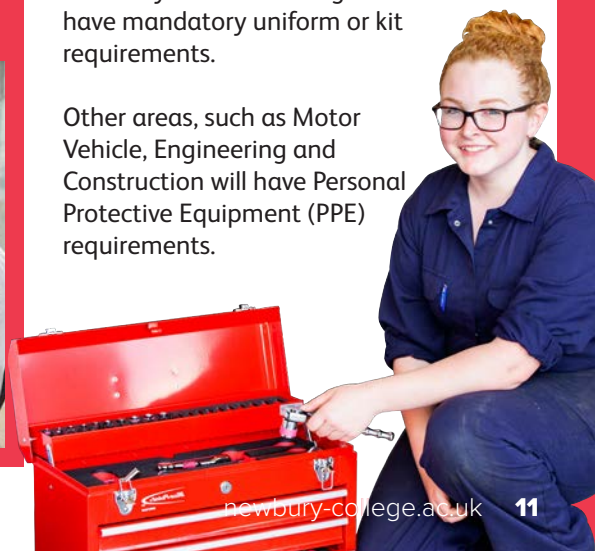
You are expected to use the time that you are not in college to complete assignment work and take advantage of work experience and part-time employment opportunities.

WHAT TO WEAR

You will be expected to dress appropriately, as if you were in the workplace.

Some areas, such as Beauty Therapy, Hairdressing, Catering, Football Academy and Performing Arts will have mandatory uniform or kit requirements.

Other areas, such as Motor Vehicle, Engineering and Construction will have Personal Protective Equipment (PPE) requirements.



ART AND DESIGN

Art and Design fosters employability through creative problem-solving, visual communication, and concept development. Our programmes equip you with industry-relevant skills across traditional and digital media, guided by professionals.

You'll build a portfolio, collaborate on real-world projects, and engage with the creative industry—preparing you for careers in graphic design, illustration, fine art, 3D modelling, or further study.

FULL-TIME PROGRAMMES

- Art, Design and Media Practice

STUDENTS SHOWCASE SOCIAL CHANGE AND SUSTAINABILITY

Art and Design students at Newbury College brought creativity, colour and career aspiration to life at their 2025 end of year show, unveiling an inspiring body of work that featured a diverse array of pieces that tackled themes such as identity, social change and sustainability.

newbury-college.ac.uk/news



Get more information online:



newbury-college.ac.uk/art

BEAUTY AND HAIRDRESSING

Beauty Therapy and Hairdressing develop key employability skills in creativity, client care, and trend awareness. Our practical programmes teach cutting, colouring, skincare, and makeup in professional salons, using industry-standard tools.

You'll gain real-world experience through client work and placements, preparing you for careers in salons, spas, fashion styling, or running your own business.



OPEN TO THE PUBLIC

newbury-college.ac.uk/intuition-salons

FULL-TIME PROGRAMMES

- Beauty Therapy
- Hairdressing



Get more information online:



newbury-college.ac.uk/beauty

BUSINESS, ACCOUNTANCY AND MANAGEMENT

Business, Accountancy, and Management programmes build essential employability skills in strategic thinking, financial planning, and leadership. You'll gain real-world insights into how organisations operate, guided by industry experts.

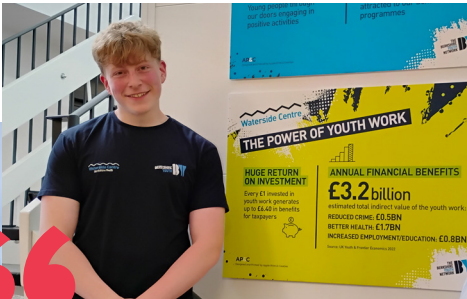
With a focus on problem-solving, decision-making, and collaboration, our courses prepare you to thrive in dynamic business environments and pursue careers in management, finance, entrepreneurship, or further study.

T-LEVELS

- Foundation to T Level Business
- Management and Administration
- Marketing

APPRENTICESHIPS

- Accounts or Finance Assistant
- Business Administrator
- Customer Service Practitioner
- Customer Service Specialist
- Team Leader or Supervisor
- Operations or Departmental Manager



My communication skills and confidence levels have increased greatly since starting my placement.

Adam Roe (T Level Management and Administration)



Get more information online:



newbury-college.ac.uk/business



CATERING, COOKERY AND HOSPITALITY

Build employability through culinary expertise, customer service, and event management. You'll train in our professional kitchen and restaurant, learning essential techniques, food safety, and front-of-house skills.

With real-world experience and guidance from industry professionals, you'll be prepared for careers as chefs, restaurant managers, or event coordinators in a fast-paced, creative sector.

FULL-TIME PROGRAMMES

- Professional Cookery



OPEN TO THE PUBLIC

newbury-college.ac.uk/the-restaurant



Get more information online:



newbury-college.ac.uk/catering

CHILD CARE AND EDUCATION

Our Child Care (Early Years) and Education programmes offer essential skills and knowledge, covering child development, safeguarding, and creating inclusive learning environments.

Learn to nurture growth through activities and structured learning, guided by experienced educators. Gain practical experience in nurseries, schools, and early years settings.

Whether aiming to be an early years practitioner, teaching assistant, or specialist, our programmes prepare you to inspire and support the next generation.

FULL-TIME PROGRAMMES

- Child Care

APPRENTICESHIPS

- Early Years Practitioner
- Early Years Educator

UCN PROGRAMMES

- Access to HE: Nursing and Midwifery



Get more information online:



newbury-college.ac.uk/childcare



CONSTRUCTION AND BUILDING TECHNOLOGY

Construction and Building Technology offer opportunities to shape our environments. Whether aiming to be a tradesperson, site manager, or technician, our programmes prepare you for a rewarding career.

Pathways include carpentry, plumbing and electrical installation, all underpinned by essential construction skills.

Learn from industry professionals, gaining practical and theoretical knowledge. Real-world experience through placements, site visits, and projects is also available.



FROM T LEVEL TO APPRENTICESHIP

Ryan Cullen, who completed his T Level in Building Services Engineering (Plumbing) at Newbury College, gained valuable experience during a work placement and has gone on to start a Level 3 Apprenticeship in Plumbing & Domestic Heating at All Plumbing Services.

newbury-college.ac.uk/news

FULL-TIME PROGRAMMES

- Multi-Trades
- Carpentry

T-LEVELS

- Foundation to T Level (Electrical)
- Foundation to T Level (Plumbing)
- Building Services Engineering (Electrical)
- Building Services Engineering (Plumbing)

APPRENTICESHIPS

- Carpentry and Joinery
- Installation and Maintenance Electrician
- Plumbing and Domestic Heating Technician
- Building Services Engineering Service and Maintenance Engineer



Get more information online:



newbury-college.ac.uk/construction

DIGITAL TECHNOLOGY

Digital Technology is central to today's connected world, and our programmes equip you with the essential skills to excel in this dynamic industry.

Guided by industry professionals, you will explore techniques and tools, working with the latest software and equipment. You will also gain practical experience through collaborative projects, live productions, and industry placements.

Whether you aim to support digital systems or create compelling content, our programmes provide the knowledge and experience for a fulfilling career in this exciting field.

FULL-TIME PROGRAMMES

- Music Technology

T-LEVELS

- Foundation to T Level Digital
- Digital Support and Security
- Media, Broadcast and Production



T LEVEL RESULTS IN CAREER KICKSTART

T Level Digital student, Jonas Pearson, who has a strong interest in cyber security, completed his industry placement with Lifecycle Software. He impressed the team so much that he was offered a permanent role as a Quality Assurance Engineer, which he started straight after finishing college in May 2025.

newbury-college.ac.uk/news



Get more information online:



newbury-college.ac.uk/digital

ENGINEERING

Engineering drives innovation, shaping technology and infrastructure. Our programmes provide a strong foundation in engineering principles and specialised skills.

Participate in real-world projects and prepare to progress in mechanical, manufacturing, electrical, or electronic engineering.

Whether you aspire to become a technician, advance in a specific field, or continue your studies to a higher level, our programmes offer the skills, insights, and practical experience to help you achieve your ambitions in this dynamic and impactful field.

FULL-TIME PROGRAMMES

- Machining

APPRENTICESHIPS

- Mechatronics Maintenance Technician
- Engineering Fitter
- Product Design and Development Engineer Degree
- Manufacturing Engineer Degree

UCN PROGRAMMES

- Engineering (Electrical and Electronic) HNC/HND Level 4/5
- Engineering (Manufacturing) HNC Level 4
- Engineering (Mechanical) HNC/HND Level 4/5
- BEng (Hons) Engineering Design Degree Level 6



Get more information online:



newbury-college.ac.uk/engineering

FOUNDATION LEARNING

We offer a range of programmes for students with learning difficulties, disabilities, and special educational needs. The primary aim of our Foundation Learning programmes is to support students in achieving a meaningful and productive life.

Each programme is tailored to meet the needs of individual learners, ensuring a personalised approach within a collaborative setting. With a focus on “careers, not courses”, our pathways aim to prepare young people for the future by developing their independence, employability, and academic attainment.

The Foundation Learning team provides excellent care, including one-to-one support for many students, helping them progress and reach their potential.

PROGRAMMES

- Connect Personal
- Focus: Introductory
- Focus: Intermediate
- Focus: Advanced
- Pre-Supported Internships
- Supported Internships



Get more information online:



newbury-college.ac.uk/high-needs

HEALTH, SOCIAL AND PUBLIC SERVICES

Whether you aspire to work directly with patients, support individuals in their communities, or pursue a role in emergency response, our Health, Social and Public Services programmes are designed to equip you with the skills and knowledge needed to succeed.

Programmes build skills in leadership and teamwork, preparing you for a wide range of community-facing roles, such as police, fire service, military, or emergency services, nursing, occupational therapy, or social work.

FULL-TIME PROGRAMMES

- Health and Social Care
- Uniformed Public Services

UCN PROGRAMMES

- Access to HE: Health and Social Care
- Access to HE: Paramedic Science
- Access to HE: Science



Get more information online:



newbury-college.ac.uk/health

MOTOR VEHICLE

The Motor Vehicle industry is evolving with advancements in technology, sustainability, and safety.

Gain hands-on experience with industry-standard tools and real vehicles, to equip you with skills in vehicle maintenance, fault diagnosis, repair techniques, and automotive electronics.

Prepare for a career in automotive repair, maintenance, and diagnostics, or work towards an apprenticeship with real-world experience and industry contacts.

FULL-TIME PROGRAMMES

- Motor Vehicle

APPRENTICESHIPS

- Autocare Technician
- Motor Vehicle Service and Maintenance Technician



Get more information online:



newbury-college.ac.uk/motor

Provided by Kingsclere Performing Arts College, our Performing Arts academy programme provides vocational, industry standard training in dance, singing and acting for students from the age of 16 years. Students gain expert tuition across a wide range of performing techniques which allows progression into a variety of creative and performing genres.

Our Performing Arts academy programme also provides the opportunity to study online A Levels alongside your vocational qualification, giving you transferable skills for meaningful employment or accessing university.

ACADEMY PROGRAMMES

- Performing Arts (Musical Theatre, Dance, Drama)



WHAT'S ON

Open Events

- Friday 23 January 2026
- Wednesday 01 July 2026

Performances

Information on upcoming performances can be found on our website.

newbury-college.ac.uk/events



Get more information online:



newbury-college.ac.uk/performance

SPORT AND FITNESS



Our sport and fitness programmes provide a solid foundation to kick off careers as professional athletes, fitness trainers, and other industry roles.

Our football academies offer exceptional training in technical skills, fitness, teamwork, and mental resilience.

Beyond football, our programmes prepare students for careers as personal trainers, sports nutritionists, physiotherapists, and sports managers, combining theoretical knowledge with practical experience for significant industry impact.

FULL-TIME PROGRAMMES

- Sport

ACADEMY PROGRAMMES

- Football Academy
 - » Basingstoke
 - » Brackley
 - » Newbury
 - » Oxford
 - » Reading

UCN PROGRAMMES

- HNC Community Coaching for England Level 4
- HND in Sport & Exercise Science (Coaching Science) Level 5



ACADEMY CROWNED NATIONAL CHAMPIONS

Newbury's Football Academy scored a historic win in the National Football Youth League Men's Trophy 2025.

newbury-college.ac.uk/news



Get more information online:



newbury-college.ac.uk/sport

HERE TO HELP



Newbury College offers a wide range of services and facilities to support students before, during and after their course.

INFORMATION SERVICES

Our Information Services team can help with pre-enrolment questions about courses, assist with applications and enrolment, provide information about financial support, loans, transport and more. Contact: info@newbury-college.ac.uk

WELLBEING

Help is available, via our Wellbeing Coordinator. This includes guidance on mindfulness and managing stress along with advice regarding drugs, contraception and how to stop smoking.

We also offer a referral service to a vast network of support agencies, including CAMHS and other local mental health services.



LEARNING SUPPORT

Help is available if you need additional support with literacy and numeracy, or require support for learning difficulties such as dyslexia. (See page 26)



CAREERS AND UNI ADVICE

We are proud to offer an independent careers advice service to support progression. The team can help with CVs, interviews and cover letters for job and university applications.

Students on a full-time study programme will also have the support of a dedicated student development coach who will support them in understanding the academic attainment they need to develop within their chosen career and help them to map out their career progression journey.

SUPPORT FOR STUDENTS WITH SEND AND EHCP

**(SPECIAL EDUCATIONAL NEEDS AND DISABILITIES)
(EDUCATION, HEALTH AND CARE PLANS)**

WHAT DO WE OFFER STUDENTS WITH SEND?

- Visits and extra support with transitioning from school.
- Support Specialists with a range of SEND and SpLD expertise and training.
- Progression and Academic Support Coaches (PASC) to support retention, achievement and progress.
- Support in some vocational courses (where required).
- Independent Learning Study support for assignment writing.
- 1:1 literacy or numeracy interventions or small group sessions with Learner Support Tutors.
- Dyslexia screening and support.
- Provision of access arrangements such as extra time, readers and scribes, modified resources.
- Assistive technology; for example, Read&Write and exam reader pens.

FUNDED FOR LONGER

All young people aged 16–18 are entitled to up to 3 years of publicly funded education or training.

If you have an EHC Plan you may need longer and can continue to be publicly funded until you have achieved the education and training outcomes in your EHC Plan; provided you are under the age of 25, the outcomes remain relevant, and you are still making progress towards them. Typically, young people with an EHC Plan spend no more than three years in an FE college before moving on to their next step.

Local Authorities may not maintain an EHCP beyond Level 3 (A-Level/T Level) attainment. EHCPs do not transfer into Higher Education (University).

MATHS AND ENGLISH

Maths and English form part of your overall study programme and if you didn't attain a grade 4 at GCSE in these subjects at school, you will be required to take Maths and English alongside your vocational qualification.

Find out more at
newbury-college.ac.uk/send

FINANCIAL SUPPORT

BURSARIES

The Bursary Fund provides financial help for young people who face barriers to staying in education.

There are two types of bursary:

- Bursaries of upto £1,200 a year for the most vulnerable young people.
- Discretionary bursaries help with the costs of travel, equipment or meals.

Contact us to find out if you are eligible.

HELP WITH TRANSPORT

The Bursary Fund may be able to help with travel costs. Contact us to find out more.



HELP WITH CHILD CARE

Child care support for students aged 20 or over may be provided via the bursary. A bursary application form will need to be completed. Child care support for students aged between 16 –19 years old is provided through the Care to Learn Scheme – www.gov.uk/care-to-learn.

FREE MEALS

Free meals are available for students (16-18) whose parents or carers are in receipt of the following benefits:

- Income Support
- Income-based Job Seekers Allowance
- Income-related Employment and Support Allowance (ESA)
- Support under Part VI of the Immigration and Asylum Act 1999
- The guarantee element of the State Pension Credit
- Child Tax Credit (provided they are not entitled to Working Tax Credit) an annual gross income of no more than £16,190, as assessed by Her Majesty's Revenue and Customs
- Working Tax Credit run-on – paid for 4 weeks after you stop qualifying for Working Tax Credit
- Universal Credit with net earnings not exceeding the equivalent of £7,400pa

If you are aged 19-25, subject to a LDA or EHC plan, and you are also in receipt of one or more of the benefits listed above, you will be entitled to free meals.

Eligible students will receive an allowance each day they are timetabled to attend their course, to be spent in The Street Café.



CAMPUS

1. ENGINEERING AND MOTOR VEHICLE WORKSHOPS

Engineering workshops and labs are fully equipped for both electronic and mechanical engineering courses up to degree and post-graduate level.

The Motor Vehicle workshop has modern facilities to enable students to develop relevant practical and theoretical skills in maintenance, testing and servicing.



2. ART STUDIOS

Art Studios provide a great space for students to explore and create, with dedicated areas for digital art creation and access to a wide range of resources.

3. KITCHEN AND RESTAURANT

A training restaurant and kitchen which enables professional cookery students the opportunity to hone their skills in a real work environment.

4. STREET CAFÉ

A refreshment service in partnership with the College Restaurant. It provides fresh coffee, soft drinks and both hot and cold snacks, which are produced in-house by the catering team and students.

5. CLASSROOMS AND IT/MEDIA SUITES

There are many spacious, modern classrooms and fully equipped IT suites, complete with interactive whiteboards. Our media suites are kitted out with Macs, fully installed with the latest Adobe software and include a recording studio.



6. SPORTS HALL AND GYM

Our Sports Hall is a fantastic addition to our College space and expands the range of sporting and enrichment activities available to all students.

The Gym provides students on relevant programmes with the opportunity to participate in physical fitness and well-being activities.





7. CONSTRUCTION AND RENEWABLES

Construction skills workshops and Renewables Centre enable students to learn a wide range of skills to prepare them for the construction industry, with separate areas for carpentry, plumbing, electrical installation and renewable energies.

8. INTUITION SALONS

Professional hair and beauty salons offer a real working environment for our students to develop their skills with paying clients.

9. STUDENT HUB

A large integrated study and support space combining individual and group study areas with access to a wide range of resources and support services.

10. FOUNDATION LEARNING

High-needs facilities with unique resources for learners with specific requirements.

11. UNIVERSITY CENTRE

University Centre Newbury (UCN) is a specialist area providing higher education courses such as HNC/HNDs and degrees.

GETTING TO COLLEGE

BY BUS

Getting to college is easy and affordable with regular bus services, operated by Newbury & District, connecting Newbury Wharf with Newbury College and the neighbouring Retail Park.

BOOST

Students can save up to 1/3 on bus travel using Boost. If you are aged 18 & under, you can buy Boost tickets without ID. If you are aged 19-21 you can buy Boost tickets on production of your student ID.

FIND OUT MORE ONLINE

www.newburyanddistrict.co.uk

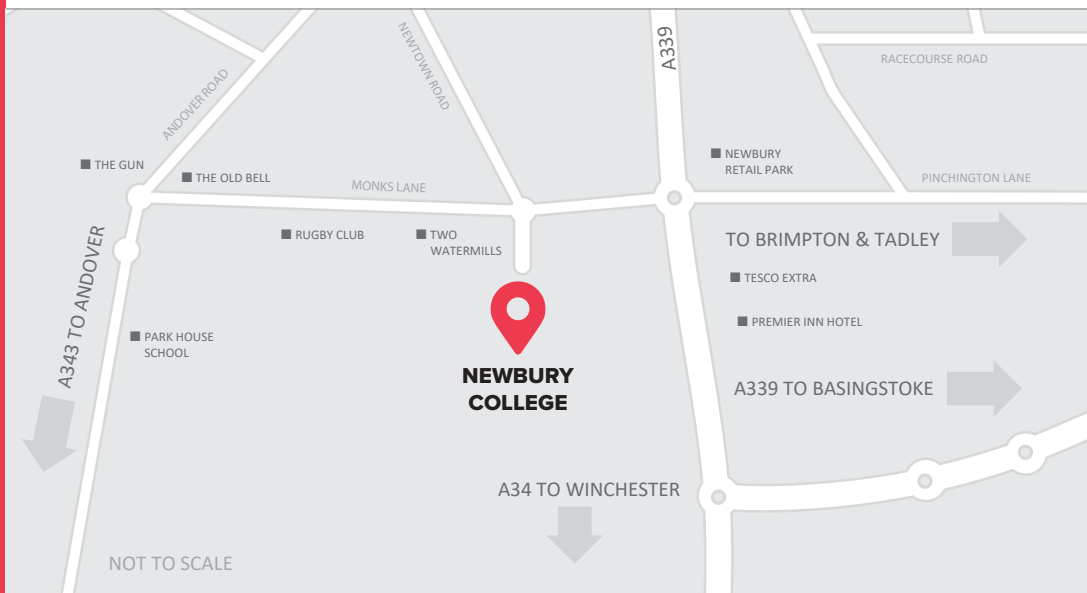
BY ROAD

POSTCODE: RG14 7TD

Newbury College is easy to get to by foot, bike, car or motorcycle and parking is free-of-charge.

BY RAIL

Newbury College is a short walk or bus ride away from the Railway Station. Trains to Newbury are operated by GWR and provide services from London, Reading, Thatcham, Hungerford and Bedwyn.



COURSES FOR ADULTS



FREE MATHS AND ENGLISH

Free maths and English courses are for anyone who wants to improve their numeracy or literacy skills, whether you are learning English as a second language or improving on your grades from school.

PROFESSIONAL AND PERSONAL DEVELOPMENT

We offer a range of professional and personal development courses designed for adults looking to enhance their skills and knowledge. Whether you're aiming to advance in your career, switch fields, or simply pursue a new interest. With experienced instructors and a supportive learning environment, you'll gain practical skills and confidence to achieve your goals.

- Digital Skills (FREE)
- Education and Training
- Electrical Installation
- Engineering (Skills Bootcamp)
- Spanish and Italian
- and more...

HIGHER EDUCATION

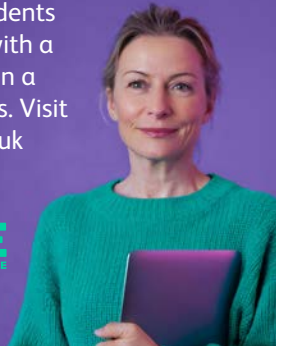
Higher education opportunities are available through University Centre Newbury (UCN), an employer-led partnership of local universities and education providers. See page 8.



FREE STUDY ONLINE

These flexible courses are available for adults throughout the year and allow you to work at a time and pace to suit your needs. Students are supported with a personal tutor on a one-to-one basis. Visit study-online.co.uk

**STUDY
ONLINE**
POWERED BY NEWBURY COLLEGE



FIND OUT MORE

newbury-college.ac.uk/adults



Follow @newburycollege

